

# LAKERS LAKERS

Laker Vent Engineering Limited

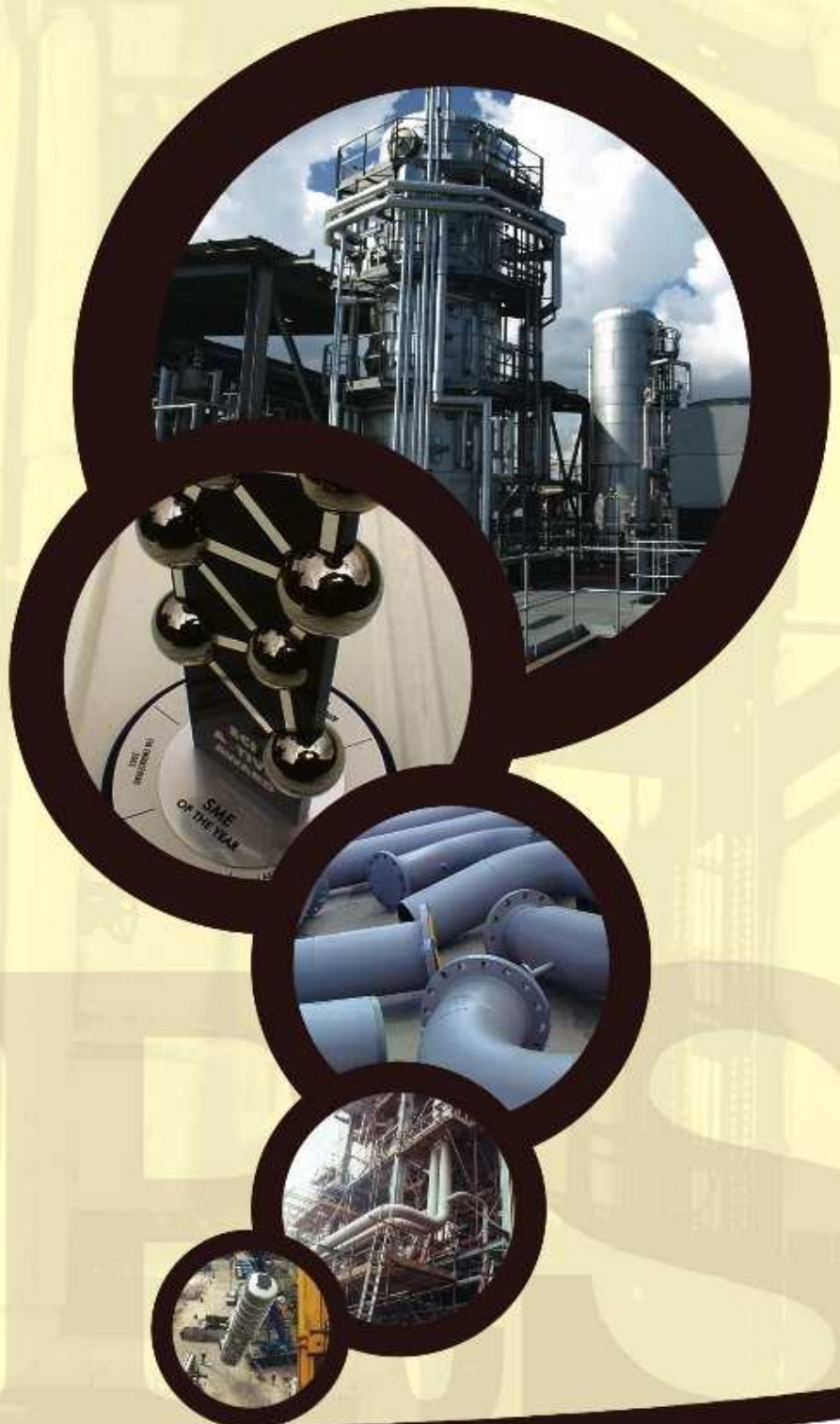
## Company Profile 2011

Laker House, North Road,  
Ellesmere Port, South Wirral,  
Cheshire, CH65 1BA

☎ 0151 355 9293  
Fax 0151 357 1893

✉ [sales@lakervent.co.uk](mailto:sales@lakervent.co.uk)  
🌐 [www.lakervent.co.uk](http://www.lakervent.co.uk)

Company Registration No. 2001095  
ISO 9001:2008 Approved  
OHSAS 18001:2007 Approved



## **CONTENTS**

1. Company Outline
2. Business Mission, Strategy and Values
3. The Laker-Vent Differentiators
4. Services Provided
5. Term Contracts
6. Quality Statement
7. Health & Safety Policy Statement
8. Environmental Policy Statement
9. Organisation Chart
10. Testimonials

## **APPENDICES**

1. Certificate of Insurance
2. Tracking Database
3. Memberships and Accreditations
4. Completed projects
5. Certificate of Approval – ISO 9001:2008  
Certificate of Approval – OHSAS 18001:2007

## COMPANY OUTLINE

Laker-Vent Engineering, established in 1962, was originally known as Laker (Northern) Limited. In 1980 Vent Engineering Limited formed, eventually coming to be known as Laker-Vent Engineering Limited following a merger.

Since the 1960's we have been providing detail design, pipe-work fabrication, pipe-work installation and mechanical installation services to industries throughout the UK. How have we done it? First, we have a progressive management team who have a "can do" attitude and a spirit of teamwork throughout the company. Second, it's because we have some great people on-board. We continually invest in our staff and it shows:

- Quality Accreditation to ISO 9001:2008
- Health & Safety Management Accreditation to OHSAS 18001:2007
- 2007, 2009 & 2010 winner of the Engineering Construction Industry Association (ECIA) BEST award for monitoring/reporting slips trips and falls awarded by our trade peers
- British Safety Council Performance Awards 1992 to 2010 for Health and Safety
- In 2008/2009 we were mechanical contractor on the European Construction Institute (ECI) 'Project of the Year' in Hull
- 2003 winner of the 'ECI SME of the Year' award for two consecutive projects in Haverhill
- All supervision are trained to NEBOSH safety standards
- All tradesmen are trained to CCNSG National Safety Passport standard

Laker-Vent has an ongoing commitment to continuous improvement. In 2009, we formed a partnership with The University of Liverpool and have been using the Knowledge Transfer Partnership Scheme as a means to improve the business. In so doing, we have employed a graduate engineer dedicated to improving our processes throughout the business.

Health and Safety is deeply rooted in the Laker-Vent culture. We are proud to have an excellent record demonstrating how our procedures are stringently enforced. We set exacting standards for ourselves so client's can be rest assured that all foreseeable risks are minimised.

## The Laker-Vent Mission Statement

*“To be recognised as the premier provider of cost effective services in our markets, through dedication to programmes of investment in personnel, controls, technology and procedures while pursuing profitable growth”.*

## The Laker-Vent Strategy

To achieve our mission, we have identified six strategies essential to developing our brand. It is the fulfilment of these six strategies that drives everything we do;

1. To continuously improve the quality of our services and products to our customers
2. To continuously improve safety in the workplace
3. To continuously improve efficiency and productivity
4. To provide an environment where our people can maximise their potential
5. To grow profitably in a competitive environment
6. To continuously improve lead times, and reduce direct costs and overheads

## The Laker-Vent Values

Our people are the core of everything we do and we recognise that through our value. We aren't saying we get it right every time, but we strive to assist everyone to become the very best they can be. As a result we have seven values we aim to live by;

1. To empower individuals and teams with responsibility and accountability
2. To value our people to use their creativity to bring about continual improvement
3. To act with trust and integrity at all times
4. To be open-minded
5. To mean what we say
6. To create pride within the business
7. To encourage participation and give support where needed

# LAKER-VENT DIFFERENTIATORS

OUR DIFFERENTIATORS	HOW OUR CLIENTS BENEFIT
Satisfied clients – many of our customers are repeat business	We have industry experience starting in 1960's and we are here to stay
A team-based relationship when working with clients	Our solutions and work packages are uniquely tailored to client needs
A team-based organisation with a clear 'can-do' attitude	We combine 'heads', 'hearts' and 'hands' to achieve tangible results and outcomes
Our own dedicated Quality Management Department	Quality continuity across the whole scope of projects we undertake
We operate with Lean and Agile business practices in place	We are cost conscious and do not pass on inefficiencies onto our clients
Winner of awards for Health and Safety practices	Client's can rest assured that project risks will be kept to an absolute minimum
Project Management training in PRINCE2 and to APM standards	No matter how demanding the requirements Laker-Vent can deliver
Flexible, rapid deployment of resources wherever its needed	Capability to quickly build-up and re-deploy teams based on client needs
Distinctive focus backed-up with dedicated resource	Dedicated Project Managers ensure your project receives 100% attention
Beneficial propositions offered on term contracts	Rebate scheme and incentives provide direct cost-savings for clients
Ownership of premises and a financially strong business	Assured business continuity and long-term partnership with all our clients
Bespoke Tracking Database provides up-to-date information	Client's can easily get to know what is happening on projects 24/7 via web log in
Client specific test-pack for every Laker-Vent project	Full documentation ensures traceability across the whole work package
Innovative thinking throughout the whole business	New ideas and technologies support all our services
Solid no-nonsense approach to business – we won't let you down	Focus on the real issues that are core to our client's business.
Family-owned business and value system to reflect partnerships	Client focus is 100% because reputation means everything to us
Technical skills and capabilities exist throughout the business	Professional level of service from all our staff no matter who they are
Foremost focus on Health and Safety via a dedicated department	We never compromise where safety or quality is concerned so no nasty surprises
An emphasis on training throughout the company	Where we find cost saving or faster ways to do things we pass it on to clients
Weld procedures and approvals to ensure compliance with standards	Our 'Test Pack' is all you need to provide the peace of mind you need

## SERVICES PROVIDED

Our premises are wholly owned by the company, totalling 2.5 acres with 20,000 sq. ft. of workshops, split to accommodate a range of materials and processes. Pipework and steelwork is fabricated to specific customer-needs and conforms to all appropriate ISO, BS EN and ASME standards and specifications.

### Project Management

From concept to completion, Laker-Vent exercise tight controls over costs, planning, timing, quality, safety and administration. Under the CDM regulations, we qualify as Principal Contractor, Designer and Contractor. As a result, we complete projects from routine maintenance to complex multi-disciplined projects across a wide range of industries. Appendix 4 provides a selection of successfully completed projects.

### Detailed Design

Our attention to detail is highly focused at every stage. State of the art CAD technology can be used to optimise detail design performance. We can partner with preferred contractors to realise project benefits that incorporate additional design interfaces such as civil/structural, electrical and instrumentation and/or HVCA. Once the detail design is agreed, Laker-Vent will formulate an accurate cost implementation programme as well as develop accurate inventory documentation for procurement. Our ability to openly discuss the detailed constructability of projects means, in many cases, it is possible for initial work to commence whilst detailed design and procurement activities are still under final review.

### Fabrication

Laker-Vent fabricate a wide range of pipework in accordance with British, European & American standards, for example ANSI-B31-3 and ASME-BPE. We work with a range of materials including;

- Carbon steel
- Stainless steel
- Aluminium
- Chrome
- Nickel
- Titanium
- Molybdenum
- Hastelloy
- Incolloy
- Monel
- UPVC
- ABS
- Polypropylene
- PVDF
- Polyethylene

Jacketed pipe-work can be fabricated in various combinations;

- Carbon steel inner and outer
- Stainless steel inner and outer
- Any other combination required to meet the process requirements

Pipe-work can also be fabricated to required standards for linings and coatings, including;

- Rubber
- Galvanised
- PTFE
- Epoxy Resin
- Bitumen

## **BS5500 Vessels, Tanks & Non-Pressure Vessels**

Laker-Vent are able to include the supply and installation of pressure vessels, tanks and non-pressure vessels, depending on project type size and specification.

## **Welding processes**

Laker-Vent operates using T.I.G, Orbital, M.I.G & M.M.A welding processes to meet stringent requirements of the various process industries. Our coded welders are subject to regular examinations and are fully certified, and approved by the leading Insurance Companies. All fabrication welding and installation conforms to all relevant BS, EN & ASNI standards where these are subjected to radiographic or other non-destructive inspection.

## **Pharmaceutical Installations to ASME BPE Standard**

Laker-Vent provides expertise to procure, fabricate and install pipe-work for;

- WFI (water for injection)
- Clean steam
- Purified water systems

In high purity applications, Laker-Vent use enclosed head Orbital Welding equipment, which we recognise as the best proven technology for meeting ASME BPE standards.

All our operators are required to submit a daily sample weld to the Q&A Manager prior to any construction welding. With each size change, further samples are taken and logged on weld record sheets for future reference.

## Modular Construction

Laker-Vent provide a cost-effective modular construction service and are willing to working with clients' design teams to provide constructability expertise for;

- Pre-Assembled Units (PAU's)
- Pre-Assembled Piperacks (PAR's)

Working this way, we can assist clients to reduce project timescales and the risk of construction issues. Other benefits include offsite fabrication in a controlled working environment, reduced expensive on-site hours and reduced risk of on-site incidents.

## Installation Teams

Our site installation teams typically consist of;

- Project Manager
- Site Manager
- Site Engineer(s)
- Site Foremen
- Tradesmen
  - Pipe Fitters, Welders, Riggers, Mechanical Fitters, Assistants
- Sub-contractors
  - NDT, Scaffolding, Insulation, Passivation and Crane Hire

## Remote tracking of projects and traceability

All projects can be remotely monitored using our Tracking Database, accessible to clients' online (see Appendix 2). In addition, we offer full traceability, including:

- Pipe-work Material Certifications
- Pipe-work cast numbers
- In-line fitting Material Certifications
- In-line fitting cast numbers
- Weld rod cast numbers for each weld
- Welder and date for each weld

At the close of each project, this information is compiled into a 'test-pack' and presented to client as a single document, providing a full history and traceability of their new installation. This includes all test system certificates and handover documentation, which naturally complies fully with PED Regulations, ISO 9001, ANSI B31-3, ANSI B31-1, BSEN 13480 or any other standard required.

## TERM CONTRACTS

Laker-Vent offer competitive rates and conditions for term contracts. By involving us early we can assist in putting together pre-sanction budgets, give accurate figures upon completion/approval and leaving our clients with no over-spend worries. We strive to work with you and offer alternative approaches such as open book and target cost basis - providing all parties with an incentive to reduce costs. We can provide systems of work based on agreed schedules of rates or day-work rates, and are monitored by both parties. We also aim to arrange a rebate scheme based around yearly volume targets to incentivise both parties.

### Unit Schedule-of-Rates

A unit rate is provided for both operations and materials, and is based on item size/value as well as necessary support, including: insulation, installation of equipment or other associated activities. Costs vary based on direct needs but normally benefit clients in a number of ways, by;

- a) Ensuring a fixed price basis for contracts whilst reducing the lead times required after design and detailed drawings have been completed
- b) Enabling erection and other tasks to proceed on associated projects whilst design and detailing is still underway
- c) Ensuring the customer pays only for the work actually installed
- d) Providing clients with a method by which additional work can be 'price checked' prior to issuing instructions to proceed

## LAKER-VENT QUALITY STATEMENT

“Our goal is to deliver our services, products and administrative support functions in full accordance with our own high standards and with mutually agreed specifications and requirements to satisfy the needs of our clients every time as planned.”



Richard Ventre (Chief Executive)  
Laker-Vent Engineering Ltd.

## LAKER-VENT HEALTH & SAFETY POLICY STATEMENT

Laker-Vent has no higher goal than ensuring the safety of our staff at all times. The Management recognises that Company operations may present Health and Safety risks to our employees, contractors and members of the public if not properly managed and are thereby committed to the following;

- Managing our processes, materials and workforce in order to prevent injury and ill health and achieve continual improvement in our Occupational Health and Safety management and performance
- Full compliance with relevant Health and Safety legal and regulatory obligations and other requirements to which the Company subscribes
- Consulting with our employees on matters affecting their Health and Safety
- Providing safe and healthy working conditions along with equipment and systems for all company employees and providing suitable, sufficient, information, training and supervision to achieve this objective
- Setting objectives and targets for Health and Safety improvement and regularly reviewing these
- Integrating Health and Safety considerations, into the selection of suppliers and subcontractors, as well as manufacturing processes and materials

This policy, which has the support of the Board of Directors, is communicated to all employees along with their Health and Safety obligations, and made available to any interested parties on request. The management is fully committed to implementing this policy and requires all employees and contractors to play their part. This policy is reviewed annually as part of the management review process.



Richard Ventre (Chief Executive)  
Laker-Vent Engineering Ltd.

## LAKER-VENT ENVIRONMENTAL POLICY STATEMENT

The Management of Laker-Vent Engineering Ltd. is committed to the principles of pollution prevention and control including the continuous improvement of our environmental performance and environmental management systems. The company also accepts our responsibility for maintaining the environment and for other people who may be affected by our activities.

Laker-Vent Engineering is committed to;

- Comply with applicable environmental legislation and other requirements to which the company subscribes which relate to our environmental aspects
- Setting objectives and targets for environmental improvement and regularly reviewing these
- Providing employee training on environmental matters to help control the activities for which they are responsible, achieved through regular communication
- Ensuring appropriate environmental standards from sub-contractors

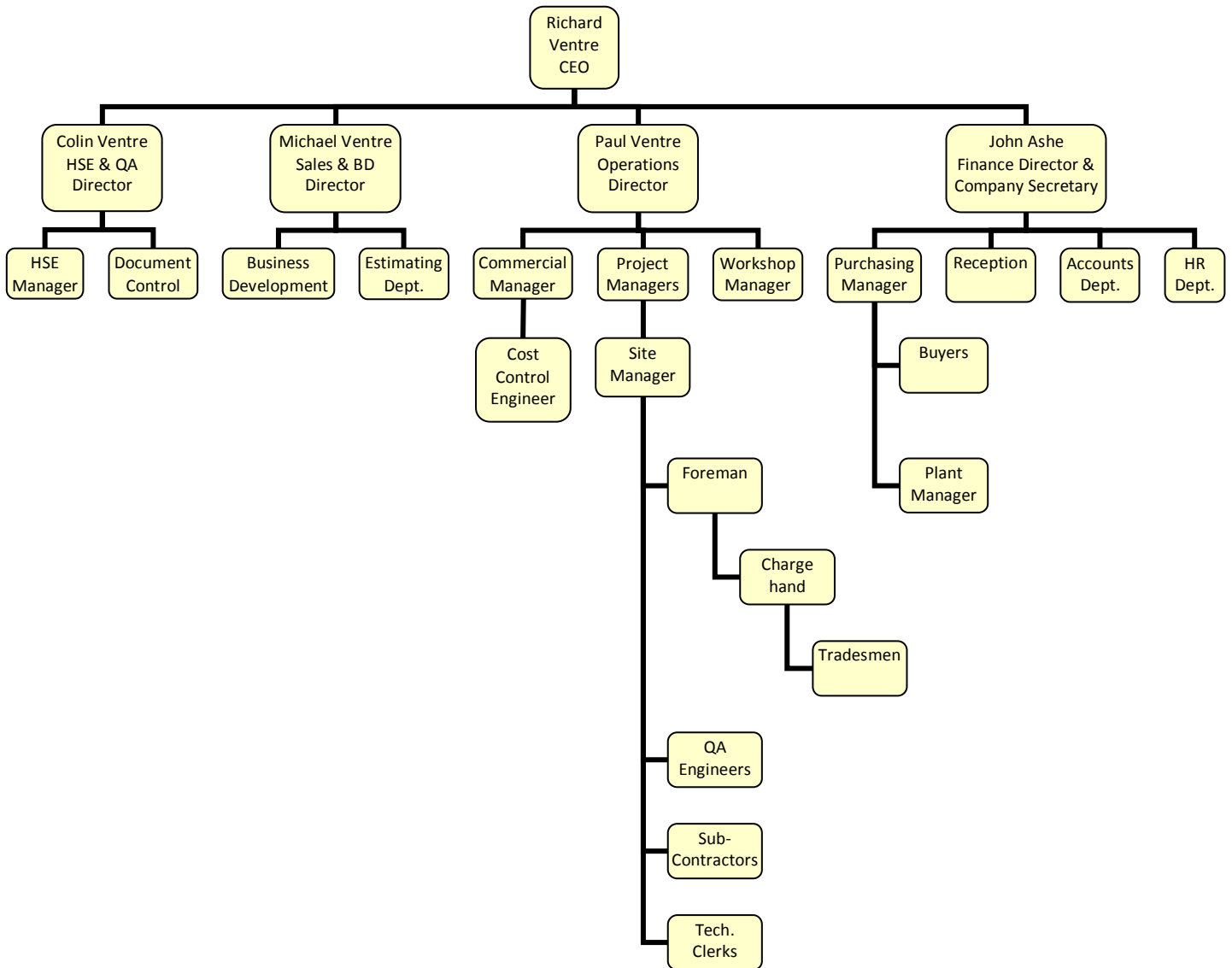
This policy, which has the support of the Board of Directors, will be communicated to all employees along with their environmental obligations, and made available to any interested party on request. The management is fully committed to implementing this policy and requires all employees and contractors to play their part. This policy is reviewed annually as part of the management review process.



Richard Ventre (Chief Executive)  
Laker-Vent Engineering Ltd.

# LAKER-VENT ORGANISATION CHART

This organization chart shows Laker-Vent Engineering's structure. This has proven to be a very flexible system, allowing us to increase our turnover by a reasonable percentage, without needing to restructure or recruit a large number of people.



# TESTIMONIALS

## ECI SME of the Year 2003

Laker-Vent won the SME of the year award in 2003. This is an award given for the “Consultant or Service Provider showing the most consistent and sustainable improvement through implementation of ECI and ACTIVE principles and Value Enhanced Practices (VEPs) during the year”.

In nominating Laker-Vent for the award Jason Holland CEL International’s Senior Project Manager commented;

*“Laker-Vent were prepared to work with CEL using the ACTIVE principles not just to put in another excellent project performance, but to improve themselves providing a better service to the industry in which they operate.”*

## ECI Project of the Year 2008

In 2008, Laker-Vent formed part of the project team that won “Project of the Year” award for work carried out as Greenergy’s Hull facility. Laker-Vent acted as the main piping and mechanical sub-contractor for the project and worked closely with PROJEN and other associated parties. The project was completed on time and under budget.

Steve McCaffrey, Head of Production and Infrastructure for Greenergy commented:

*“Without doubt the finished project is a success, acclaimed by ourselves. Given that this was a fast track project on a new site utilising a significant number of contractors, this is a commendable achievement and all concerned should take credit for their contribution.”*

## Global Renewables 2009 & 2010

*“As a PFI project, the time period from initial interest to financial close and on to construction is often 3 years+, but Laker-Vent stayed with us and so secured the work, and we are glad that they did.”*

*“Given the complex and sometimes unique nature of the piping systems on the Lancashire Waste Project, W2R was looking for a contractor that was competent, professional and flexible as well as good value and Laker-Vent met those criteria. Laker-Vent worked with our teams to help with design detailing and construction methodology, and went on to carry out the materials procurement, shop fabrication, erection and testing. Laker-Vent did a great job and have been great to work with.”*

Bob Johnson, Project Director, Waste 2 Resources LLP

# APPENDIX 1 : CERTIFICATE OF INSURANCE

## All Policies

Cover is extended to indemnify any Principal to the extent that the contract between the Insured and such Principal so requires in respect of work undertaken in connection with the business. The Insured's Business is described as:

*Pipe and Steel Fabricators/Erectors, Mechanical Service and Installation Engineers, Labour Hirers for Identical Work as above and Property Owners.*

Except where specifically mentioned, cover applies as per the usual wordings for this type of business extended to note in all cases that there would be standard printed conditions of contract applied to Laker Vent, such as JCT, and that there could be other customer imposed conditions.

On the liability policies Pollution is excluded other than the usual industry wording requiring there to be sudden and accidental pollution arising from a single incident.

TYPE AND INSURER	DETAIL	INDEMNITY LIMITS
<b>Motor Fleet</b> Zurich Commercial	300/FH187855 Renewal Due 19 <sup>th</sup> June 2011 Comprehensive with a £1000 AD excess	Third Party Injury – unlimited Third Party Damage caused by- A car - £50M A commercial vehicle - £5M
<b>Contract Works and Plant</b> Zurich Commercial	AJ217097 Renewal Due – 19 <sup>th</sup> December 2011 Includes Maintenance Guarantee period confirmed at 12 months and not “visits only” Contract Works Own Plant Hired-in Plant Excess - £2,500 each and every loss	Limit of Liability £4M £312,000 £1.1M
<b>Employer's Liability</b> QBE	Y047846QBE0110A Renewal Due: 19 <sup>th</sup> December 2011	£10M any one accident including all costs.
<b>Public/Products Liability</b> QBE	Y047846QBE0110A Renewal Due: 19 <sup>th</sup> December 2011 Includes: <ul style="list-style-type: none"> <li>• Negligence of sub-contractors to the same extent as the Insured</li> <li>• Design work unless supplied separately for a fee</li> <li>• Products Financial Loss subject to a Limit of £100,000</li> <li>• Environmental Statutory Liability to a limit of £1,000,000</li> </ul> <i>Excess £5,000 on Property Damage increased to £10,000 for the Financial Loss cover.</i>	£5M any one accident but limited re. Product Liability to £5M in any one period of insurance
<b>Notes</b> There is a Hot Work Condition applicable to the Public/Products Liability Policy. Liability for exposure to asbestos under the EL/PL/Products insurance is restricted to accidental exposure and a limit of £1M.		

## Insurances Continued - Burning Welding and Cutting Condition

It is a condition precedent to liability under this Policy that the following precautions are adhered to on each occasion where the Assured or persons acting on behalf of the Assured are using any oxy-acetylene or electric welding or cutting/grinding equipment or blow lamp or blow torch or hot air gun away from your premises

- 1 the immediate area in which the operation is to be carried out must be segregated to the greatest practicable extent by the use of screens made of metal and/or fire retardant material

- 2 the whole of this segregated area must be adequately cleaned and freed from combustible material before operations commence
- 3 combustible floors/substances in or surrounding this segregated area must be liberally covered with sand or protected by overlapping sheets of incombustible material
- 4 where work is being carried out in any enclosed area an additional employee of the Assured or an employee of the occupier shall be present at all times to guard against an outbreak of fire
- 5 no work should be carried out unless specifically authorised by the occupier who should also be asked to approve the safety arrangements
- 6 the following must be kept available for immediate use near the scene of operations
  - a) Suitable fire extinguishers and/or
  - b) Hoses connected up in readiness for immediate use and tested prior to the commencement of the work
- 7 a thorough examination must be made in the vicinity of the work approximately one hour after the termination of each operation In the event that it is not practicable for such examination to be carried out by the assureds own employee then appropriate arrangements must be made with the occupier
- 8 before "burning off" metal work built into or projecting through walls or partitions an examination should be made to confirm that the other end of the metal is not in a hazardous proximity to combustible material which may be ignited by the conduction of heat

Furthermore where the Assured or persons acting on behalf of the Assured burns debris it is a Condition precedent to liability under this Policy that the following precautions shall be taken on each occasion

- 1 Fires to be in a cleared area and at a distance of at least ten yards from any property
- 2 Fire not to be left unattended at any time
- 3 A suitable fire extinguisher to be kept available for immediate use
- 4 Fires to be extinguished at least one hour prior to leaving site at the end of each working day

#### **Use of Tar Boilers**

It is a condition precedent that whenever tar boilers are used

1. a regulation spill tray is provided
2. suitable and approved fire extinguishers are kept on hand for immediate use
3. equipment and work is not left unattended
4. a thorough examination must be made in the vicinity of the work at regular intervals up to one hour after the completion of the work

#### **Specific Extension to Public Liability - Environmental Statutory Liability**

Includes all sums including statutory debts the insured is legally liable to pay for remediation or preventative costs in respect of environmental damage where liability arises under an environmental protection directive statute or statutory instrument provide that

(a) Pollution is caused by a sudden identifiable unintended and unexpected incident that takes place in its entirety at a specific moment in time and place

(b) This extension excludes:

Preventative costs to avoid imminent damage to own land/premises

Remediation to own land/premises

Removal of any significant risk to human health on the insured's own land

Achieving any improvement beyond that required under law

Preventative costs without there being any actual occurrence of pollution

Any amount in excess of £1,000,000.

## APPENDIX 2 : TRACKING DATABASE

### Planning & Tracking

All work is input and monitored using our bespoke 'Tracking Database' system which tracks projects throughout their complete lifecycle. This runs from Document Control, through project planning, to BoM, traceability information and to recording hours for each project.

The Tracking Database is continually being developed to provide the best tools for our employees, reducing time and increasing information accuracy. It is available to clients through a web-portal if required;



Welcome Micheal Ventre you are logged on to the Laker-Vent Extranet

Log Off

### Project Tracking

Select a project then click the button to open the required document.

Select Project

Forms	Project Reports	Workshop Reports
<input type="button" value="Isometric Register"/> <input type="button" value="Workshop Tracking"/> <input type="button" value="Fabrication Control"/> <input type="button" value="Site Tracking"/>	<input type="button" value="Project Overdues by Job"/> <input type="button" value="Project Overdues (All)"/> <div style="border: 1px solid gray; padding: 2px;"><p>Sort By <input type="text" value="Line No"/></p><input type="button" value="Project Status"/></div>	<div style="border: 1px solid gray; padding: 5px;"><p>Start Date <input type="text"/></p><p>End Date <input type="text"/></p><input type="button" value="Workshop Schedule"/></div>

## APPENDIX 3 : MEMBERSHIPS & APPROVALS

Laker-Vent Engineering Ltd. are approved by and accredited to the following organisations;



**ECIA** Engineering Construction Industry Association



## APPENDIX 4 : LAKER-VENT ENGINEERING - COMPLETED PROJECTS

Key:

Power Plant or HP Steam Services	Oil, Gas & Chemicals
Pharmaceuticals	Paper Plants
Glass Fibre Plants	Personal Care Products
Agro Chemicals	Powder Handling
Automotive & Aero Support	Food & Brewing

CLIENT	CONTACT	PROJECT DESCRIPTION	WORK TYPE	YEAR	VALUE
Chemdal Ltd		Super Absorbents	Pipework fabrication & installation & mechanical installation	1993/1994	£1.5m
Courtaulds Engineering	Tony Cooper	Aroma Plant, B.B.A Widnes	Pipework fabrication & installation & mechanical installation	1993	£800k
Mowlem Engineering	Steve Jones	Combined Heat & Power Plant, Harworth Colliery	Pipework fabrication & installation	1993	£460k
Warwick International	Phil Bond	Extensions to Existing Plants	Pipework fabrication & installation	1993	£200k
Courtaulds Engineering	Dr Beverley Stanford	FSA Grimsby Technical Absorbents	Pipework fabrication & installation	1994	£390k
Zeneca Macclesfield	John Davies	DA1 Expansion	Pipework fabrication & installation	1994/1995	£360k
Biwater Process	Hugh Jones	Hays Chemicals Sanbach	Pipework fabrication & installation	1995	£200k
B.B.A Widnes	Paul Townsend	Design & Build New Aroma Plant	Pipework fabrication & installation	1995	£250k
Fluor Daniel	John Shields	Bridgewater Paper Dip 3 Tie Ins	Pipework fabrication & installation	1995	£188k
Solvay Intertox	Chris Yeardsley	PBS 4	Design and build powder handling plant	1995	£750k
Zeneca Macclesfield	John Davies	Development Pures K300	Pipework fabrication & installation	1995	£500k
Zeneca Engineering	Alan Barris	A2 Project Zeneca Huddersfield	Pipework fabrication & installation	1996	£1.2m

CLIENT	CONTACT	PROJECT DESCRIPTION	WORK TYPE	YEAR	VALUE
Mowlem Engineering	Bob Bennett	Solvay Interox Distillation Plant	Pipework fabrication & installation	1996	£588k
AMEC	Malcolm Gibbons	K240 Project @ Fisons Pharmaceuticals	Design, fabricate & install pipework	1996	£980k
Morton International	Colin Shrimpton	A & SP Expansion	Detailed design, mechanical installation & pipework, fabrication & installation	1996	£955k
Zeneca Engineering	Alan Barras	PMG2 Zeneca Huddersfield	Pipework fabrication & installation	1996/1997	£1.2m
Pall Portsmouth	Martin Jay	Slurry Oil unit Fabrication	Supply, fabricate, package and deliver	1996/1997	£380k
Courtaulds Engineering	Tony Cooper	CHP Expansion, Courtaulds Fibres, Grimsby	Fabricate pipework, mechanical and pipework installation	1997	£450k
Zeneca Engineering	Harry Pinckerton	Inters 3 Project, Zeneca Huddersfield	Pipework detailed design, fabrication and installation	1997	£1.1m
Norbrook Labs Northern Ireland	Dr Ivan Martin	New Veterinary Drug Manufacturing facility	Design, fabricate & install pipework	1997/1998	£250k
Process Engineering Services	Mark Roberts	Upgrade of Pharma facility Thornton & Ross, Huddersfield	Design, fabricate & install pipework & equipment	1998	£380k
ML Labs	Peter Brown	Upgrade of Pharma Facility	Design, Fabricate & install pipework & equipment	1998/1999	£175k
Jacobs Engineering	Mike Boyes	Hep B 2000 Project	Detailed design	1999	£750k
AstraZeneca	Paul Yowds	SSMF Project	Detail design, pipework & mechanical fabrication & Installation	1999	£1.8m
Balfour Beatty	John Cherry	Waste to energy plant, Dundee	Detail design, pipework & mechanical fabrication & Installation	1999	£1.6m
Kvaerner Construction	Kevin Smith	Bridgewater Paper CHP	Detail design, pipework & mechanical fabrication & Installation	1999/2000	£980k
Akross Chemicals	Tony Duffy	New Phosphates Plant	Pipework & mechanical fabrication & installation	1999	£390k
Epichem	Phil Jacobs	Chloride Salvation	New pipework & mechanical installation	1999/2000	£250k
Peboc Eastman	Steph Fell	PB1 Expansion	Detailed design, pipework & mechanical works	1999/2000	£250k
Jacobs Engineering	Aiden Dooley	Orion Project Rhodia Pharma	Pipework, steelwork & mechanical installation	2000/2001	£3.8m

CLIENT	CONTACT	PROJECT DESCRIPTION	WORK TYPE	YEAR	VALUE
CEL International	Ron Smith	P&G Longbenton	Piping & mechanical works	2001	£1.3m
Addison Projects	Markus Addison	Whitbread Brewery	CHP pipework fabrication and installation	2001	£50k
CEL International	Gareth Davies	Genzyme, Cambridge	LSP1 Piping & Mechanical	2001	£1.1m
Huppmann GmbH	Ian Haywood	Carlsberg Tetley, Northampton	Disinvestment Works	2001	£338k
CEL Internat.	Jason Holland	Genzyme, Cambridge	LSP2 Piping & Mechanical	2001/2002	£1.4m
Thermal Transfer	Chris Mosley	Ipsen Biopharm	Pipework Services	2001	£130k
Jacobs Engineering	Aiden Dooley	Boston Project	Pipework, & Mechanical Installation	2001	£250k
MDS	George Lambert	Rolls Royce, Bristol	New Aero Engine Test Facility	2002	£160k
CEL International	Lorne Clark	Acordis Chems, Spondon	15AA Modernisation	2002	£187k
CEL International	Lorne Clark	Acordis Chems, Spondon	Department 4	2002	£42k
CEL International	Lorne Clark	Acordis Chems, Spondon	Sulphuric Acid Modifications	2001/2002	£45k
CEL International	Mr Ian Barter	Vitrex, Rotherham	New plant Installation	2002	£545k
Shanks Environmental	Bryan Moore	Shanks, Liverpool	Neutralisation Project	2002	£240k
PPG Industries	James Deveau	Furnace Plant six-month shutdown	Pipework, Steelwork, HVAC, Civils, Insulation and Scaffolding	2002/2003	£3.4m
Rosser & Russel	Rod Wallace	Stainless Steel process pipework for Burger Plant	Supply, pipework fabrication and installation	2004	£450k
Acordis Acetate	Eric Jones	New Filter Tow Expansion	Design, pipework & mechanical installation	2003/2004	£800k
RPS/GWU	Dr Kulbe	Flue Gas De-Sulphurisation Plant, Cottam Power Station	Pipework & Mechanical Services	2004/2005	£980k
Airbus	Chris Dougal	Airbus Test facility, Filton Bristol	Detailed design, build and commissioning of new Fuel test Facility	2004/2005	£3.8m
PROJEN	Martin Seabrook	GSK, Stevenage	Small module modifications	2005	£350k
Mowlem	Dave Ashcroft	Castle Cement	Piping and Mechanical Services	2005	£130k

CLIENT	CONTACT	PROJECT DESCRIPTION	WORK TYPE	YEAR	VALUE
AMEC	Simon Pickup	Extension to existing veterinary Drugs complex	Hygienic & non-hygienic pipework	2004/2005	£145k
Novartis Vaccines	Graham Shoel	D4 Trade Pipework fabrication & Installation	Supply, pipework fabrication and installation	2005/2007	£6.1m
Cargill	Jim Yates	New Whrat Plant	Detailed design, pipework fabrication/installation and mechanical installation	2006	£4.0m
Airbus	Chris Dougal	Airbus-Filton Test facility	12 month maintenance contract	2005/2006	£110k
CEL International	Daryn Jenkins	Genzyme, Cambridge	Sevelamer Piping & Mechanical	2007	£2.5m
Baker Petrolite	Paul Harding	Baker Petrolite, Knowsley	Plant upgrades	2006/2007	£300k
PZ Cussons	John Gorman	New process production facility, Manchester	Supply, Fabrication and Installation of Process and Services Pipework & Mechanical Plant Installation	2007/2008	£1.2m
PROJEN	Tony Lea	Greenergy Bio-diesel plant, Immingham	Detail design, fabrication and installation of Process pipework and supports	2007/2008	£3m
Rocktron	Wyn Turnbull/ Jonathan Foott	New Process plant for new product	Detail design, fabrication and installation of mechanical packages, process & services pipework	2008	£2.8m
Novartis Vaccines	Stephen Kirk	ETA package	Mechanical installation, process Pipework fabrication Installation and testing	2008	£650k
CEL International	Brian Parker/ Mike Taylor	Marlow Foods, Billingham	Mechanical installation, supply and installation of pipework	2008/2009	£4.5m
Baxter Healthcare	Michael Fry	New-build manufacturing Facility	Principal Contractor, Supply, fabrication and installation of WFI, PPW & CIP systems	2009/2010	£1.1m
W2R Thornton	Mike Pepper/ B Johnson	New Waste to Energy Plant, Thornton	Supply, Fabrication and Installation of process pipework and associated supports	2009/2010	£3.3m
W2R Leyland	Mike Pepper/ B Johnson	New Waste to Energy Plant, Leyland	Supply, Fabrication and Installation of process pipework and associated supports	2009/2010	£3.3m
Diageo Leven works via Dalkia	CEL International PM and Designers	Diageo Leven Works, Scotland	This project is for the supply, fabrication and installation of modular piperack, fully loaded	2009/2011	~£4m

# APPENDIX 5 : ISO 9001:2008 & OHSAS 18001:2007 CERTIFICATES



**CERTIFICATE OF APPROVAL**

This is to certify that the Quality Management System of:

**Laker-Vent Engineering Ltd**  
**Ellesmere Port, Cheshire**  
**United Kingdom**

has been approved by Lloyd's Register Quality Assurance to the following Quality Management System Standards:

**ISO 9001:2008**

The Quality Management System is applicable to:

**Fabrication and installation, of pipework typically for the chemical, petrochemical, gas, pharmaceutical and other process industries.**

Approval Certificate No: LRQ 0924229

Original Approval: 10 February 1994

Current Certificate: 14 April 2009

Certificate Expiry: 28 February 2012



*A Gibson*

Issued by: Lloyd's Register Quality Assurance Limited

This document is subject to the provisions on the reverse

71, Fenwick Street, London EC2A 4ES United Kingdom. Registration number LR 90970

The approval is valid for as long as the client maintains the ISO 9001:2008 system and complies with the ISO 9001:2008 standard as published by ISO.



**CERTIFICATE OF APPROVAL**

This is to certify that the Occupational Health & Safety Management System of:

**Laker-Vent Engineering Ltd**  
**Ellesmere Port, Cheshire**  
**United Kingdom**

has been approved by Lloyd's Register Quality Assurance to the following standard:

**OHSAS 18001:2007**

The Occupational Health & Safety Management System is applicable to:

**Fabrication and installation of pipework, typically for the chemical, petrochemical, gas, pharmaceutical and other process industries.**

Approval Certificate No: LRQ 4005659

Original Approval: 2 August 2010

Current Certificate: 2 August 2010

Certificate Expiry: 1 August 2013



*E T Medcraft*

Issued by: Lloyd's Register Quality Assurance Limited

This document is subject to the provisions on the reverse

71, Fenwick Street, London EC2A 4ES United Kingdom. Registration number LR 90970

The approval is valid for as long as the client maintains the OHSAS 18001:2007 system and complies with the OHSAS 18001:2007 standard as published by BSI.